

# **FIRST CHOICE BULL SALE**

**22nd ANNUAL**



**SATURDAY APRIL 6, 2013  
1:00 P.M.**

**SALE TO BE HELD AT  
VJV AUCTION MART  
DAWSON CREEK, BC**

**Sale conducted by Patterson's Auction Mart Ltd.**  
Sale day phone (250) 719-8191 or (250) 219-0791 for phone in bids

**APPROXIMATELY  
50 BLACK ANGUS YEARLING BULLS**

## **CONSIGNORS**

**GUMBO GULCH CATTLE CO.  
B.Z. & STEVE AYLWARD  
(250) 786-5478  
CELL: (250) 784-5136**

**CANYON TREE FARMS INC.  
LYNN JACKSON &  
HARRY HOOKE  
(250) 996-8180  
CELL: (250) 996-1577  
[www.canyontreefarms.ca](http://www.canyontreefarms.ca)**



# Dawson Co-operative Union

WARREN FREDERICKSON

Agro Manager

Home & Agro Center

10200-8th Street  
Dawson Creek, BC  
V1G 3P8

**Business (250) 782-3371**  
Fax (250) 782-8891



## Integra Tire

Auto Centre

---

**Ph: (250) 782-1777**  
**Fax: (250) 782-1775**

**[www.integratire.com](http://www.integratire.com)**

**1145 Alaska Avenue, Dawson Creek, BC**



# **WELCOME TO FIRST CHOICE 2013 22nd ANNUAL SALE**

***Gumbo Gulch Cattle Co. • B.Z. and Steve Aylward, Dawson Creek, BC***

*The Aylward family invite you to our 22nd Annual Bull Sale. Thanks to all bidders and buyers at our previous sales and welcome to new bidders and potential buyers.*

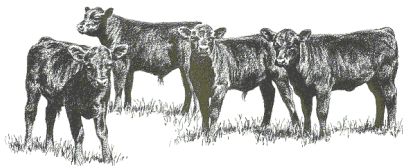
*We are pleased to welcome guest consignors Lynn Jackson and Harry Hooke of Canyon Tree Farms. They are contributing 4 of the best from their elite herd..*

*For 46 years we have been producing and improving Black Angus cattle for cattlemen across northern B.C. and Alberta and beyond. With over 200 cows bred to leading natural and A.I. sires only the top half make it to the sale.*

*Sires are selected for traits important to our customers who sell beef by the pound - live calves with explosive growth and performance.*

*The cattle have been carefully and ruthlessly selected for soundness, conformation and productivity and the many other important traits for which Angus are noted. Raised in real ranch conditions Gumbo Gulch Bulls are ready to work anywhere, anytime.*

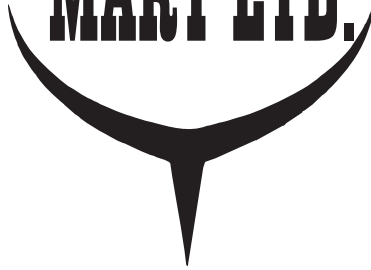
*Whatever your needs we have the bulls to do the job. Please join us on April 6th for lunch and the 22nd Annual First Choice Bull Sale.*



**INSURANCE AVAILABLE ON SALE DAY**

# PATTERSON'S AUCTION

## MART LTD.



Bonded and Licensed Livestock  
Dealers and Auctioneers

TEL: (250) 782-6272

TEL: (250) 782-6500

FAX: (250) 782-1881

EMAIL: [pcc@neonet.bc.ca](mailto:pcc@neonet.bc.ca)

BOX 478

DAWSON CREEK BC

V1G 4H3



# Tiger

**OP** office<sup>®</sup>  
plus  
simply more 

**No BULL...**  
**Just Quality Service**  
**and Reliability**

250.782.2907 • 800.665.3831

[www.tiger.bc.ca](http://www.tiger.bc.ca) • [mail@tiger.bc.ca](mailto:mail@tiger.bc.ca)

916 - 102nd Avenue, Dawson Creek, BC V1G 2B7

# TABLE OF CONTENTS

Expected Progeny Differences (EPDS) .....	4
Why So Much Emphasis on Bulls. ....	4
Gumbo Gulch Natural Sires .....	5
B.B.A.R. Nugget 765 .....	5
Northline Inked 76W. ....	5
Gumbo Gulch Dynamite 14X .....	5
Gumbo Gulch 834 Legacy 177X .....	5
Gumbo Gulch Pendleton 41X .....	5
Foxtail Krugerand 212X .....	6
4K Fast Forward 1X .....	6
Foxtail Krugerand 223X .....	6
Gumbo Gulch Black Angus Bulls .....	7
Canyon Tree Farms Black Angus Bulls .....	17

## ***Calving Ease - (CE)***

Calving ease is often related to birth weight of a bull. This is partly true but there are other factors that influence calving ease. The dam and her management are at least 50% of calving ease.

Nutrition, gestation and environment all influence birth weight. We have rated each bull in the sale based on all the information we have available.

- \*\*\* Should produce minimal problems when bred to moderate size first calf heifers
- \*\* Recommended for second calvers, small framed cows large heifers.
- \* Recommended for mature cows.



Contact consignors for details

# EXPECTED PROGENY DIFFERENCES (EPDS)

Statistics generated for individual cattle through national genetic evaluations.

- ✓ allow breeders to estimate a young animal's breeding value as a parent
- ✓ allow a fair comparison of breeding value by removing environmental bias such as climate, feed and special management
- ✓ best tool available to compare animals between herd, countries and year of birth
- ✓ help breeders make informed decisions regarding breeding stock selection by evaluating numerous traits such as growth-related traits (BW, WW, YW, Milk), carcass (REA, FAT, %IMF, etc.) and reproductive efficiency (CE, MCE, SC)
- ✓ estimate the group performance of one parent compared to the group performance of another parent, *assuming similar mates*

**EPD's evaluate group averages and offspring's performance. They can not predict individual performance or weights.**

For example, if Bull A (weaning weight EPD of +10) and Bull B (WW of +60) were randomly mated with ten similar cows, we would expect the group average weaning weight of Bull A's offspring to be 50 lbs. lighter than that of Bull B's (60 - 10 = 50).

Calf	A	B
1	500	400
2	510	450
3	520	500
4	530	550
5	540	600
6	560	600
7	570	650
8	580	700
9	590	750
10	600	800
<b>Avg.</b>	<b>550</b>	<b>600</b>

Note that not all calves from Bull B have a higher weaning weight but the average is 50 lbs higher.

```

    graph LR
      BA[BULL A] --- GA[GROUP A OFFSPRING]
      BH[COW HERD] --- GA
      BH --- GB[GROUP B OFFSPRING]
      BB[BULL B] --- GB
      GA --- GA_Avg((Avg. 550 lbs))
      GB --- GB_Avg((Avg. 600 lbs))
    
```

**Accuracy** - reflects the reliability of the EPD value. High accuracy values (>.80) mean the EPD value is closer to the true breeding value than an EPD value with a lower accuracy (<.20).

To evaluate seedstock, use EPD's pedigree and visual assessment. With EPDs, the concept of "intermediate optimums" works best. Selection for one trait or for extremes generally results in unexpected consequences due to genetic correlations - for example,

intense selection for high yearling weight will also increase birth weight. Successful cattle breeding requires a thoughtful and balanced approach to optimize fertility, growth and carcass merit while improving profitability and efficiency.

## Why so much emphasis on Bulls?



### *Bulls*

*have the greatest economic impact on any breeding program, thus bull selection is one of the most important decisions that a cowman makes during the course of a year.*

*A bull sires 20 to 40 calves each year while a cow produces half or less this many in her lifetime. It's been estimated that 80% of herd improvement is directly attributed to bull selection.*

# Natural Sires



April 22, 2007

JOHNSTON NUGGET 370E

**B.B.A.R. NUGGET 318**

MISS MORRISON 18C

B.B.A.R. ROYCE 24G

**B.B.A.R. BLACKCAP 3165**

B.B.A.R. BLACKCAP 1165

A powerful and athletic individual that is admired for his extra length of body, thickness and added depth of body

BW: 81 lbs

LAE 65T **B.B.A.R. Nugget 765**

	BW	WW	YW	MILK
EPDS	+0.7	+24	+51	+7
ACC	33	21	20	11

## NORTHLINE INKED 76W

ROTH REGULATOR 0405

**NORTHLINE RIPTIDE 130N**

NORTHLINE TIDY BEE 130G

GAMBLES HOT ROD

**NORTHLINE SAVING GRACE 776T**

NORTHLINE SAVING GRACE 76L

JANUARY 1, 2009

BW: 93

BW: +4.8

WW: +35

YW: +62

MILK: +21

## GUMBO GULCH DYNAMITE 14X

BALDRIDGE KABOOM K243

**MOHNEN DYNAMITE 1356**

MOHNEN JILT 910

TC FOREMAN 016

**LUCY OF GUMBO GULCH 117R**

LUCY OF GUMBO GULCH 110J

FEBRUARY 7, 2010

BW: 100

BW: +4.7

WW: +41

YW: +85

MILK: +14

## GUMBO GULCH 834 LEGACY 177X

O C C LEGACY 839L

**B.B.A.R. LEGACY 834**

B.B.A.R. RUBY BELLE 34'99

TC FREEDOM 104

**EVERA OF GUMBO GULCH 24R**

EVERA OF GUMBO GULCH 23N

MAY 1, 2010

BW: 81

BW: +1.3

WW: +34

YW: +68

MILK: +17

## GUMBO GULCH PENDLETON 41X

S A V FINAL ANSWER 0035

**HARB PENDLETON 765 J H**

H A R B BLACK LADY 375 J H

CROSBY TOM BOY 106S

**GEORGINA OF GUMBO GULCH 129U**

GEORGINA OF GUMBO GULCH 78G

FEBRUARY 14, 2010

BW: 82

BW: -1.7

WW: +32

YW: +66

MILK: +20

## FOXTAIL KRUGERAND 212X

F A R KRUGERRAND 410H  
**ASPEN KRUGERAND 02S**  
LORRUST CRK LASS 912J  
FT STOCKMAN 201J  
**AMM FOXTAIL PRECIOUS 12M**  
HILL VIEW PRECIOUS 12H

MARCH 1, 2010  
BW: 89

BW:  
WW:  
YW:  
MILK:

## 4K FAST FORWARD 1X

YOUNG DALE TOUCH DOWN 36M  
**YOUNG DALE DOUBLE T 106P**  
YOUNG DALE LADY SANDRA 17J  
NORTHLINE RIPTIDE 130N  
**NORTHLINE HUSH 145T**  
NORTHLINE BLACK CRYSTAL 145L

MARCH 9, 2010  
BW: 88

BW: +9.0  
WW: +33  
YW: +51  
MILK: +18

## FOXTAIL KRUGERAND 223X

F A R KRUGERRAND 410H  
**ASPEN KRUGERAND 02S**  
LORRUST CRK LASS 912J  
CRESENT CREEK ROGUE 4K  
**THOUSAND HILLS SUPER SENTRA 223M**  
PME SUPER SENTRA 37F

MARCH 15, 2010  
BW: 86

BW:  
WW:  
YW:  
MILK:



**JOHN DEERE**

**PRAIRIECOAST**  
equipment

### DAVE ANDERSON

Agricultural Sales Representative  
**250-219-1831**

### DALE HOFSTRAND

Agricultural Sales Representative  
**250-719-9250**

Bus: 250-782-4141  
Fax: 250-782-9780  
Toll Free: 1-877-553-3373

81 Rolla Road Box 720  
Dawson Creek, BC  
V1G 4H7

[www.pcequip.ca](http://www.pcequip.ca)



**Dale & Steve Aylward**  
**GUMBO GULCH CATTLE CO.**

Farm located on Edmonton Highway 4 Miles South of Pouce Coupe BC  
Phone: (250) 786-5031 or 786-5478 • Cell: (250) 784-5136

*Black Angus*

LOT 2Z **	GUMBO GULCH LEGACY 2Z JNI 2Z	FEBRUARY 22, 2012 BW: 91 Adj 205 day Wt: 667lbs
	B.B.A.R LEGACY 834 GUMBO GULCH 834 LEGACY 177X EVERA OF GUMBO GULCH 24R CROSBY FORSIGHT 78U GEORGINA OF GUMBO GULCH 23X GEORGINA OF GUMBO GULCH 11U	
LOT 3Z ***	GUMBO GULCH PENDLE 3Z JNI 3Z	FEBRUARY 22, 2012 BW: 65 Adj 205 day Wt: 588lbs
	HARB PENDLETON 765 J H GUMBO GULCH PENDLETON 41X GEORGINA OF GUMBO GULCH 129U DOUBLE AA OLD POST BANDOLIER BLACKBIRD OF GUMBO GULCH 89X BLACKBIRD OF GUMBO GULCH 145N	
LOT 5Z *	GUMBO GULCH DYNAMO 5Z JNI 5Z	FEBRUARY 24, 2012 BW: 101 Adj 205 day Wt: 611lbs
	MOHNEN DYNAMITE 1356 GUMBO GULCH DYNAMITE 14X LUCY OF GUMBO GULCH 117R S A V LEGACY 5216 BESSIE OF GUMBO GULCH 50W BESSIE OF GUMBO GULCH 118L	
LOT 9Z *	GUMBO GULCH KRUGER 9Z JNI 9Z	FEBRUARY 27, 2012 BW: 93 Nov. 11 Wt: 782
	ASPEN KRUGERAND 2S FOXTAIL KRUGERAND 212X AMM FOXTAIL PRECIOUS 12M SEALIN CREEK HEADS UP 119S BLACKCAP OF GUMBO GULCH 122U BLACKCAP OF GUMBO GULCH 71S	

LOT 12Z *	GUMBO GULCH NUGGET 12Z JNI 12Z  B.B.A.R NUGGET 318 B.B.A.R NUGGET 765 B.B.A.R BLACKCAP 3165 GUMBO GULCH ULTRA PRIDE OF GUMBO GULCH 167L PRIDE OF GUMBO GULCH 37A	FEBRUARY 27, 2012 BW: 106 Adj 205 day Wt: 709lbs
LOT 19Z *	GUMBO GULCH KRUGER 19Z JNI 19Z  ASPEN KRUGERAND 2S FOXTAIL KRUGERAND 212X AMM FOXTAIL PRECIOUS 12M TC STOUT 407 PRIDE OF GUMBO GULCH 52U PRIDE OF GUMBO GULCH 120R	MARCH 1, 2012 BW: 86 Adj 205 day Wt: 708lbs
LOT 23Z ***	GUMBO GULCH KRUGER 23Z JNI 23Z  ASPEN KRUGERAND 2S FOXTAIL KRUGERAND 223X THOUSAND HILLS SUPER SENTA 223M HARB PENDLETON 765 CASSIE OF GUMBO GULCH 68X CASSIE OF GUMBO GULCH 40M	MARCH 2, 2012 BW: 77 Adj 205 day Wt: 712lbs
LOT 26Z *	GUMBO GULCH DYNO 26Z JNI 26Z  MOHNEN DYNAMITE 1356 GUMBO GULCH DYNAMITE 14X LUCY OF GUMBO GULCH 117R ANKONIAN WERNER WILD FIRE 96 BLACKCAP OF GUMBO GULCH 85W BLACKBIRD OF GUMBO GULCH 56T	MARCH 2, 2012 BW: 93 Adj 205 day Wt: 679lbs

LOT 32Z *	GUMBO GULCH KRUGER 32Z JNI 32Z  ASPEN KRUGERAND 2S FOXTAIL KRUGERAND 212X AMM FOXTAIL PRECIOUS 12M H A IMAGE MAKER 0415 BESSIE OF GUMBO GULCH 39U BESSIE OF GUMBO GULCH 114S	MARCH 4, 2012 BW: 100 Adj 205 day Wt: 574lbs
LOT 38Z *	GUMBO GULCH DYNO 38Z JNI 38Z  MOHNEN DYNAMITE 1356 GUMBO GULCH DYNAMITE 14X LUCY OF GUMBO GULCH 117R SCHURRTOP MC 2500 BLACKBIRD OF GUMBO GULCH 106W BLACKCAP OF GUMBO GULCH 16F	MARCH 4, 2012 BW: 100 Adj 205 day Wt: 684lbs
LOT 40Z ***	GUMBO GULCH LEGACY 40Z JNI 40Z  B.B.A.R LEGACY 834 GUMBO GULCH 834 LEGACY 177X EVERA OF GUMBO GULCH 24R CROSBY FORSIGHT 78U BESSIE OF GUMBO GULCH 39X BESSIE OF GUMBO GULCH 39U	MARCH 5, 2012 BW: 83 Adj 205 day Wt: 658lbs
LOT 46Z **	GUMBO GULCH NUGENT 46Z JNI 46Z  B.B.A.R NUGGET 318 B.B.A.R NUGGET 765 B.B.A.R BLACKCAP 3165 TAFIKA UNIQUE 44M CASSIE OF GUMBO GULCH 39R CASSIE OF GUMBO GULCH 40M	MARCH 6, 2012 BW: 85 Adj 205 day Wt: 763lbs

LOT 48Z *	GUMBO GULCH FORWARD 48Z JNI 48Z  YOUNG DALE DOUBLE T 106P 4K FAST FORWARD 1X NORTHLINE HUSH 145T CROSBY TRAVELER 73T BEAUTY LASS OF GUMBO GULCH 168W BEAUTY LASS OF GUMBO GULCH 155	MARCH 6, 2012 BW: 99 Adj 205 day Wt: 602lbs
LOT 55Z ***	GUMBO GULCH LEGACY 55Z JNI 55Z  B.B.A.R LEGACY 834 GUMBO GULCH 834 LEGACY 177X EVERA OF GUMBO GULCH 24R CROSBY TOM BOY 106S BELL OF GUMBO GULCH 76X BELL OF GUMBO GULCH 68R	MARCH 7, 2012 BW: 78 Adj 205 day Wt: 616lbs
LOT 58Z ***	GUMBO GULCH LEGACY 58Z JNI 58Z  B.B.A.R LEGACY 834 GUMBO GULCH 834 LEGACY 177X EVERA OF GUMBO GULCH 24R CROSBY FORSIGHT 91U BLACK BEAUTY OF GUMBO GULCH 78X BLACK BEAUTY OF GUMBO GULCH 62	MARCH 8, 2012 BW: 71 Adj 205 day Wt: 595lbs
LOT 59Z *	GUMBO GULCH NUGENT 59Z JNI 59Z  B.B.A.R NUGGET 318 B.B.A.R NUGGET 765 B.B.A.R BLACKCAP 3165 SITZ ALLIANCE 6595 LUCY OF GUMBO GULCH 81P LUCY OF GUMBO GULCH 81H	MARCH 8, 2012 BW: 105 Adj 205 day Wt: 762lbs

LOT 61Z  
\*\*

GUMBO GULCH NUGENT 61Z  
JNI 61Z

MARCH 9, 2012  
BW: 91  
Adj 205 day Wt: 692lbs

B.B.A.R. NUGGET 318  
B.B.A.R NUGGET 765  
B.B.A.R. BLACKCAP 3165  
GUMBO GULCH DUSTIN 4E  
GEORGINA OF GUMBO GULCH 78G  
GEORGINA OF GUMBO GULCH 95C

LOT 62Z  
\*

GUMBO GULCH DYNO 62Z  
JNI 62Z

MARCH 9, 2012  
BW: 93  
Adj 205 day Wt: 671lbs

MOHNEN DYNAMITE 1356  
GUMBO GULCH DYNAMITE 14X  
LUCY OF GUMBO GULCH 117R  
BLAST HOBSON 16T  
BELL OF GUMBO GULCH 183W  
BELL OF GUMBO GULCH 198T

LOT 63Z  
\*\*\*

GUMBO GULCH KRUGER 63Z  
JNI 63Z

MARCH 10, 2012  
BW: 69  
Adj 205 day Wt: 691lbs

ASPEN KRUGERAND 2S  
FOXTAIL KRUGERAND 223X  
THOUSAND HILLS SUPER SENTA 223M  
HARB PENDLETON 765 J H  
MISS LUCY OF GUMBO GULCH 13X  
MISS LUCY OF GUMBO GULCH 53U

LOT 68Z  
\*\*

GUMBO GULCH NUGENT 68Z  
JNI 68Z

MARCH 10, 2012  
BW: 94  
Adj 205 day Wt: 664lbs

B.B.A.R. NUGGET 318  
B.B.A.R NUGGET 765  
B.B.A.R. BLACKCAP 3165  
GUMBO GULCH BANDO 191R  
BLACKBIRD OF GUMBO GULCH 194T  
BLACKBIRD OF GUMBO GULCH 131L

LOT 70Z *	GUMBO GULCH BLACK INK 70Z JN1 70Z  NORTHLINE RIPTIDE 130N NORTHLINE INKED 76W NORTHLINE SAVING GRACE 776T BICKFORD KRUGERRAND 65K GEORGINA OF GUMBO GULCH 4M GEORGINA OF GUMBO GULCH 111K	MARCH 10, 2012 BW: 95 Adj 205 day Wt: 732lbs
LOT 79Z **	GUMBO GULCH KRUGER 79Z JN1 79Z  ASPEN KRUGERAND 2S FOXTAIL KRUGERAND 223X THOUSAND HILLS SUPER SENTA 223M BOYD ON TARGET 1083 BEAUTY LASS OF GUMBO GULCH 19T BEAUTY LASS OF GUMBO GULCH 44K	MARCH 11, 2012 BW: 89 Adj 205 day Wt: 658lbs
LOT 80Z *	GUMBO GULCH BLACKINK 80Z JN1 80Z  NORTHLINE RIPTIDE 130N NORTHLINE INKED 76W NORTHLINE SAVING GRACE 776T GUMBO GULCH KRUGERRAND 19P PRIDE OF GUMBO GULCH 201T PRIDE OF GUMBO GULCH 40B	MARCH 11, 2012 BW: 95 Adj 205 day Wt: 671lbs
LOT 86Z ***	GUMBO GULCH LEGACY 86Z JN1 86Z  B.B.A.R LEGACY 834 GUMBO GULCH 834 LEGACY 177X EVERA OF GUMBO GULCH 24R CROSBY TOM BOY 106S BELL OF GUMBO GULCH 47X BELL OF GUMBO GULCH 22M	MARCH 12, 2012 BW: 83 Adj 205 day Wt: 617lbs

LOT 87Z  
\*\*\*

GUMBO GULCH PENDLE 87Z  
JNI 87Z

MARCH 13, 2012  
BW: 78  
Adj 205 day Wt: 632lbs

HARB PENDLETON 765 J H  
GUMBO GULCH PENDLETON 41X  
GEORGINA OF GUMBO GULCH 129U  
BLAST HOBSON 16T  
GEORGINA OF GUMBO GULCH 129X  
GEORGINA OF GUMBO GULCH 17U

LOT 94Z  
\*

GUMBO GULCH PACER 94Z  
JNI 94Z

MARCH 13, 2012  
BW: 97  
Adj 205 day Wt: 657lbs

LOOKOUT PACER 14T  
WILP/HAR PACER 78W  
WILP/HAR BLACKCAP 77T  
BICKFORD KRUGERRAND 65K  
BLACKBIRD OF GUMBO GULCH 145N  
BLACKBIRD OF GUMBO GULCH 52G

LOT 101Z  
\*

GUMBO GULCH BLACKINK 101Z  
JNI 101Z

MARCH 15, 2012  
BW: 101  
Adj 205 day Wt: 659lbs

NORTHLINE INKED 130N  
NORTHLINE INKED 76W  
NORTHLINE SAVING GRACE 776T  
BICKFORD KRUGERRAND 65K  
BLACKBIRD OF GUMBO GULCH 204N  
BLACK BIRD OF GUMBO GULCH 38F

LOT 107Z  
\*

GUMBO GULCH BLACKINK 107Z  
JNI 107Z

MARCH 16, 2012  
BW: 98  
Adj 205 day Wt: 630lbs

NORTHLINE RIPTIDE 130N  
NORTHLINE INKED 76W  
NORTHLINE SAVING GRACE 776T  
F A R KRUGERRAND 410H  
BLK BEAUTY OF GUMBO GULCH 33R  
BLACK BEAUTY OF GUMBO GULCH 84N

LOT 112Z *	GUMBO GULCH KRUGER 112Z JNI 112Z  ASPEN KRUGERAND 2S FOXTAIL KRUGERAND 212X AMM FOXTAIL PRECIOUS 12M TC STOUT 407 EVERA OF GUMBO GULCH 22U EVERA OF GUMBO GULCH 48M	MARCH 18, 2012 BW: 100 Adj 205 day Wt: 688lbs
LOT 113Z **	GUMBO GULCH KRUGER 113Z JNI 113Z  ASPEN KRUGERAND 2S FOXTAIL KRUGERAND 223X THOUSAND HILLS SUPER SENTA 223M HARB PENDLETON 765 J H BLACKBIRD OF GUMBO GULCH 4X BLACKBIRD OF GUMBO GULCH 71U	MARCH 19, 2012 BW: 86 Adj 205 day Wt: 788lbs
LOT 114Z *	GUMBO GULCH BLACKINK 114Z JNI 114Z  NORTHLINE RIPTIDE 130N NORTHLINE INKED 76W NORTHLINE SAVING GRACE 776T F A R KRUGERRAND 410H GEORGINA OF GUMBO GULCH 101R GEORGINA OF GUMBO GULCH 64N	MARCH 19, 2012 BW: 102 Adj 205 day Wt: 670lbs
LOT 124Z *	GUMBO GULCH FORWARD 124Z JNI 124Z  YOUNG DALE DOUBLE T 106P 4K FAST FORWARD 1X NORTHLINE HUSH 145T TC STOUT 407 EVERA OF GUMBO GULCH 21U EVERA OF GUMBO GULCH 83P	MARCH 20, 2012 BW: 95 Adj 205 day Wt: 706lbs



LOT 125Z *	GUMBO GULCH FORWARD 125Z JN1 125Z  YOUNG DALE DOUBLE T 106P 4K FAST FORWARD 1X NORTHLINE HUSH 145T SEALIN CREEK HEADS UP 119S BELL OF GUMBO GULCH 171W BELL OF GUMBO GULCH 45S	MARCH 20, 2012 BW: 104 Adj 205 day Wt: 620lbs
LOT 127Z *	GUMBO GULCH DYNO 127Z JN1 127Z  MOHNEN DYNAMITE 1356 GUMBO GULCH DYNAMITE 14X LUCY OF GUMBO GULCH 117R S A V HERITAGE 6295 BLACKBIRD OF GUMBO GULCH 14W BLACKBIRD OF GUMBO GULCH 70S	MARCH 21, 2012 BW: 99 Adj 205 day Wt: 729lbs
LOT 130Z **	GUMBO GULCH NUGENT 130Z JN1 130Z  B.B.A.R. NUGGET 318 B.B.A.R NUGGET 765 B.B.A.R. BLACKCAP 3165 GUMBO GULCH TRAVELER 20F BLACKCAP OF GUMBO GULCH 26J BLACKCAP OF GUMBO GULCH 9G	MARCH 21, 2012 BW: 93 Adj 205 day Wt: 730lbs
LOT 133Z *	GUMBO GULCH PACERZ 133Z JN1 133Z  LOOKOUT PACER 14T WILP/HAR PACER 78W WILP/HAR BLACKCAP 77T LINDON BATTLE CRY MISS DIANE OF GUMBO GULCH 63N MISS DIANE OF GUMBO GULCH 10K	MARCH 24, 2012 BW:99 Adj 205 day Wt: 742lbs

LOT 146Z *	GUMBO GULCH DYNO 146Z JNI 146Z  MOHNEN DYNAMITE 1356 GUMBO GULCH DYNAMITE 14X LUCY OF GUMBO GULCH 117R ANKONIAN WERNER WILD FIRE 96 EVERA OF GUMBO GULCH 91W EVERA OF GUMBO GULCH 144N	MARCH 30, 2012 BW: 94 Adj 205 day Wt: 645lbs
LOT 157Z *	GUMBO GULCH FORWARD 157Z JNI 157Z  YOUNG DALE DOUBLE T 106P 4K FAST FORWARD 1X NORTHLINE HUSH 145T S A V LEGACY 5216 EVERA OF GUMBO GULCH 86W EVERA OF GUMBO GULCH 128T	APRIL 9, 2012 BW: 90 Adj 205 day Wt: 677lbs
LOT 164Z ***	GUMBO GULCH LEGACY 164Z JNI 164Z  B.B.A.R LEGACY 834 GUMBO GULCH 834 LEGACY 177X EVERA OF GUMBO GULCH 24R MOHNEN DYNAMITE 1356 BLACKBIRD OF GUMBO GULCH 2X BLACKBIRD OF GUMBO GULCH 4R	APRIL 13, 2012 BW: 84 Adj 205 day Wt: 708lbs
LOT 166Z *	GUMBO GULCH BLACK INK 166Z JNI 166Z  NORTHLINE RIPTIDE 130N NORTHLINE INKED 76W NORTHLINE SAVING GRACE 776T DOUBLE A HUSKER 13P EVERA OF GUMBO GULCH 186T EVERA OF GUMBO GULCH 22P	APRIL 17, 2012 BW: 78          TWIN Nov. 11 Wt: 639

# Lynn Jackson and Harry Hooke CANYON TREE FARMS INC.

Fort St. James, BC  
Phone: (250) 996-8180 • Cell: (250) 996-1577  
lynnjackson@ctfarms.ca  
www.canyontreefarms.ca

## Black Angus

*This is our fifth year consigning to the "First Choice Bull Sale". We are very honoured to be a part of this great tradition. The females that we have purchased from Gumbo Gulch, and their daughters, now represent over 1/3 of our breeding females. These are the type of genetics that puts longevity in your herd. These females are extremely maternal, with excellent feet, udders and dispositions. Our goal is to raise moderate framed cattle that produce calves with moderate birth weights, exceptional gain and all round quality performance and outstanding carcasses. We have a wonderful selection of yearling bulls for offer this year out of our herd sires, C-Bar Predominant 788T and Peak Dot Encore 381W. These yearling bulls have the natural muscle, width and depth we have been striving to put into all of our breeding stock. They are all very correct with great performance, excellent scrotal measurements and quiet dispositions. Whether you are looking for a heifer bull or your next herd sire, we have something that will add value and quality to your herd. We would love to show you our bulls and our herd but if you can't make it to us, we look forward to seeing you at the sale. Hope you have a great calving season and we'll see you soon.*

*\*These bulls become the responsibility of the buyers on sale day.*

### LOT CTFA 45Z

#### CTF BLACKBIRD PREDOMINANT 45Z

Tattoo: CTFA 11Y

Birth Date: February 9, 2012

Registration #1659474



Actual BW: 96lbs

Adj 205 day Wt: 723lbs    205 Index: 107

Adj 365 day Wt: 1182lbs    365 Index: 109

Canadian Angus Black EPDs - Based on Spring 2013 NCE

	Birth Weight	Weaning Weight	Yearling Weight	Milk	Total Maternal	Scrotal Circ.	Calving Ease	Mat. Calving Ease
EPD	+5.3	+41	+69	+18	+40	+0.47	-9.0	+1.0
Acc	34	24	15	11	/	P	20	8

Sire: C-BAR PREDOMINANT 788T (1427963)  
 REMITALL INDICATOR 115K  
 N.B.A. 4G HI LITE 33M  
 KLUZAK EILEENMERE 22H  
 SCHURRTOP MC  
 SCHURRTOP MC 2500 AMF CAF  
 SCHURRTOP R S 1413 2153  
 Dam: BLACKBIRD OF GUMBO GULCH 45W (1523872)  
 GUMBO GULCH WHAM 149J  
 BLACKBIRD OF GUMBO GULCH 145M  
 BLACKBIRD OF GUMBO GULCH 52G

**LOT CTFA 75Z**

**CTF EVERA ENCORE 75Z**

Tattoo: CTFA 75Z  
 Birth Date: February 25, 2012  
 Registration #1659481



Actual BW: 96lbs  
 Adj 205 day Wt: 785lbs 205 Index: 117  
 Adj 365 day Wt: 1207lbs 365 Index: 100

D H D TRAVELER 6807 AMF NHF  
 DUFF ENCORE 702 AMF CAF NHF  
 O C C DIXIE ERICA 814G  
 Sire: PEAK DOT ENCORE 381W (1537022)  
 PEAK DOT PRIME CUT 75N  
 DUCHESS OF PEAK DOT 517R  
 DUCHESS OF PEAK DOT 642K

S A F FOCUS OF E R AMF CAF NHF  
 S A F STRATEGY 9015 AMF CAF NHF  
 S A F ROYAL QUEEN 5084 CAF  
 Dam: EVERA OF GUMBO GULCH 75T  
 SITZ ALLIANCE 6595 DMF AMF CAF NHF  
 EVERA OF GUMBO GULCH 41P  
 EVERA OF GUMBO GULCH 114J

Canadian Angus Black EPDs - Based on Spring 2013 NCE

	Birth Weight	Weaning Weight	Yearling Weight	Milk	Total Maternal	Scrotal Circ.	Calving Ease	Mat. Calving Ease
EPD	+3.9	+53	+90	+16	+43	/	0.0	+7.0
Acc	33	22	12	11	/	/	19	8

**LOT CTFA 96Z**

**CTF LULU MAR PREDOMINANT 96Z**

Tattoo: CTFA 96Z  
 Birth Date: JANUARY 27, 2012  
 Registration #1659463



Actual BW: 94lbs  
 Adj 205 day Wt: 706lbs 205 Index: 104  
 Adj 365 day Wt: 1140lbs 365 Index: 103

S A V 8180TRAVELER 004 AMF CAF NHF  
 S A V 004 PREDOMINANT 4438 AMF CAF NHF  
 S A V EMBLYNETTE 1182  
 Sire: C-BAR PREDOMINANT 788T (1427963)  
 REMITALL INDICATOR 115K  
 N.B.A. 4G HI LITE 33M  
 KLUZAK EILEENMERE 22H

TC FREEDOM 104 AMF CAF NHF  
 GUMBO GULCH FREEDOM 44S  
 LUCY OF GUMBO GULCH 99G  
 Dam: CTF LULU MAR FREEDOM 96W  
 MYTTY IN FOCUS AMF CAF NHF  
 LULU MAR OF GUMBO GULCH 96S  
 LULU MAR OF GUMBO GULCH 97G

Canadian Angus Black EPDs - Based on Spring 2013 NCE

	Birth Weight	Weaning Weight	Yearling Weight	Milk	Total Maternal	Scrotal Circ.	Calving Ease	Mat. Calving Ease
EPD	+3.5	+39	+72	+17	+37	/	-5.0	+1.0
Acc	34	23	16	10	/	/	19	7

## LOT CTFA 111Z

### CTF BELL ENCORE 111Z

Tattoo: CTFA 111Z

Birth Date: JANUARY 19, 2012

Registration #1659454



Actual BW: 75lbs

Adj 205 day Wt: 634lbs 205 Index: 95

Adj 365 day Wt: 1045lbs 365 Index: 98

Canadian Angus Black EPDs - Based on Spring 2013 NCE

	Birth Weight	Weaning Weight	Yearling Weight	Milk	Total Maternal	Scrotal Circ.	Calving Ease	Mat. Calving Ease
EPD	+0.7	+41	+73	+16	+37	/	+9.0	+11.0
Acc	34	22	13	12	/	/	19	9

D H D TRAVELER 6807 AMF NHF  
 DUFF ENCORE 702 AMF CAF NHF  
 O C C DIXIE ERICA 814G  
 Sire: PEAK DOT ENCORE 381W (1537022)  
 PEAK DOT PRIME CUT 75N  
 DUCHESS OF PEAK DOT 517R  
 DUCHESS OF PEAK DOT 642K

S A F FOCUS OF E R AMF CAF NHF  
 MYTTY IN FOCUS AMF CAF NHF  
 MYTTY COUNTLESS 906  
 Dam: BELL OF GUMBO GULCH 111S (1327838)  
 J R JUICE 2005 CAF  
 BELL OF GUMBO GULCH 5F  
 BELL OF GUMBO GULCH 84B

## TERMS & CONDITIONS OF SALE

**LIABILITIES:** All persons who attend the sale do so at their own risk and Patterson's Auction Mart Ltd., and Breeders assume no liability, legal or otherwise, for any accidents which may occur. The contributor is not held responsible for damage caused by foreign bodies, physical injury, mismanagement, or any sickness not apparent at the time of sale. Therefore it is important to insure your bull and is required if the bull is to be returned to consignor's place, after the animal is sold.

**ANNOUNCEMENTS:** Errors discovered in the catalogue will be corrected by announcements from the auction stand at sale time and such corrections will take precedence over the printed matter in the catalogue. Other information will be updated on sale day.

**REGISTRATION & TRANSFER:** All animals sell with completed registration certificates and will be

transferred to the new owner following the sale.

**TERMS & SETTLEMENT:** Terms of the sale are cash or certified cheque and settlement must be made immediately after completion of sale. Settlement to be made before animals are removed from the premises.

**BREEDER'S GUARANTEE:** All bulls have been semen evaluated by a Veterinarian. In the event that a bull fails to service cows, the individual seller shall be contacted and a satisfactory and fair settlement will be made.

**REMOVAL:** If you are unable to move your bull after the sale, there will be no charge up to May 6, 2013. After this date a charge of \$2.00 per day will apply. Bull must be insured.

**HERD HEALTH:** Herd is vaccinated with all vaccines recommended by the Dawson Creek Vet Clinic, and treated with Ivomec.

*Thank you for attending our sale.*



# **KEDDIE'S**

**Feed • Ranch Supplies • Clothing • Saddlery**

- Animal Health and Calving Supplies
  - Feed • Flaman Trailer Rentals
- Forage Seeds • Salts and Minerals
  - Morand Equipment
  - Solar Watering Systems
  - Fence Post and Wire

**9808 - 132 Avenue • Grande Prairie, AB  
1-800-390-6924**

# Walter Fritsche Trucking

Custom Feed Hauling

(250) 784-5124

## Dawson Creek Veterinary Clinic

---

Dr. Mike Ross

Dr. Zoë Ross

Dr. Christa Harder



Dr. Gudrun Gunther

Dr. Matt Allen

Dr. Amanda Breuer

**Striving to deliver the highest quality service and products to result in optimum herd health, success and profitability for our clients.**

**Check out our bovine handling facility.**

**Continuously moving towards a better experience for you and your cattle**

**Large Animal: (250) 782-1080    Small Animal: (250) 782-5616**

238-116 Avenue , Dawson Creek, BC V1G 3C8

[www.dawsoncreekvet.com](http://www.dawsoncreekvet.com)



# FIRST CHOICE BULL SALE



**GUMBO GULCH CATTLE CO. ~ BLACK ANGUS**  
**(250) 786-5478 • (250) 784-5136**

• • •

